

# LIGHTT ASSEMBLIES [DRIVERS CAB LIGHT]

## EWEB 2300



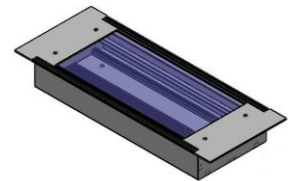
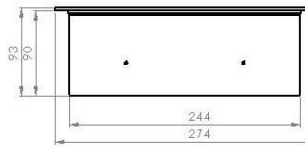
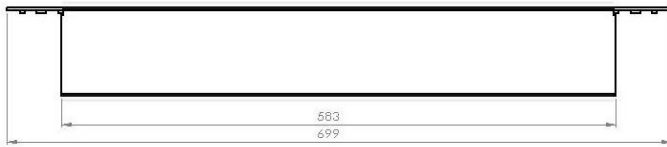
### DESCRIPTION:

The unit is a 583mm long Aluminium extrusion. A fluorescent lamp is fitted inside of the unit, powered from an electronic inverter, built into the light system. The light has a dimming function that can reduce light output by up to 40% if less light is required in the cabin/room. A polycarbonate diffuser spreads the light more evenly, while a reflector plate at the back of the lamp reflects light back out of the unit, increasing the amount of light the unit delivers without increasing the current demand.

### FEATURES:

- Under voltage Protection
- Over voltage Protection
- Reverse Polarity Protection
- Voltage Surge Protection
- Current Surge Protection
- Dimming Function
- 660mm Module Available

### OUTLINE DIMENSIONS (in millimetres):



### SPECIFICATION SHEET:

SPECIFICATIONS	DATA
PART NUMBER	EWEB 2301
CONTINUOUS OUTPUT POWER	55 Watt
DIM OUTPUT POWER	27 Watt
INPUT VOLTAGE RANGE	60Vdc - 160Vdc
INPUT VOLTAGE RATED FOR	110Vdc
FREQUENCY INPUT / DC	DC
PEAK OUTPUT CURRENT	$I_o = 198\text{mA}$ (110V)
PEAK INPUT CURRENT	$I_{rms} = 683\text{mA}$ (60V) / $376\text{mA}$ (110V)
EFFICIENCY	90%
NO LOAD CURRENT	4 mA
PROTECTION AVAILABLE	Over and under voltage input Reverse Polarity (Bridge Rectifier)
COMPLY TO SPECIFICATION	SABS 1628:1995 Report no 5483/128/0323/S073
LAMP TO DRIVE	PL-S 55W/840/4P
OPERATING TEMPERATURE	0 - 40°C
DIMENSIONS	583mm x 244mm x 93mm
WEIGHT	5 Kg