

LIGHT ASSEMBLIES [*Handheld Light*]

EWEB 2400



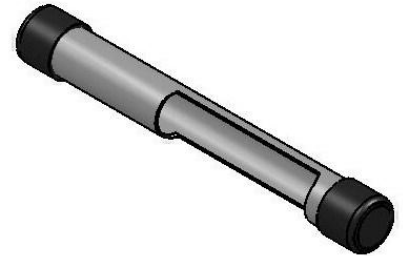
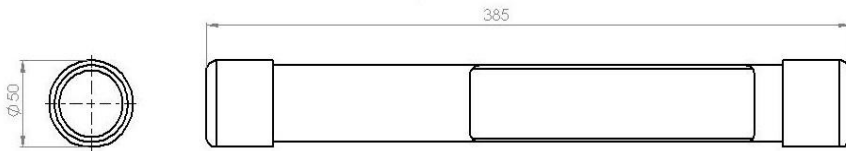
DESCRIPTION:

This portable handheld light is an 11 W light system. On the inside the light consists out of a PVC housing to mount and protect the ballast and an 11W lamp. It is enclosed by a diffused polycarbonate lens and two rubber end seal caps.

FEATURES:

- Various Input Voltage Modules
- Under voltage Protection
- Over voltage Protection
- Reverse Polarity Protection
- Voltage Surge Protection
- Current Surge Protection
- Magnetic Base Add-on

OUTLINE DIMENSIONS (in millimetres):



SPECIFICATION SHEET:

PRODUCT	INPUT VOLTAGE	INVERTER	MASS	DIMENSIONS (L x R) mm
12Vdc HANDHELD	10Vdc - 14.8Vdc	12Vdc 11W STD	0.66kg	385 x 50
24Vdc HANDHELD	20Vdc - 28Vdc	24Vdc 11W STD		
32Vac HANDHELD	22Vac - 42Vac	32Vac 11W STD		
110Vdc HANDHELD	60Vdc - 160Vdc	110Vdc 11W handheld		
230Vac HANDHELD	160Vac -260Vac	230Vac 11W STD		
32Vdc HANDHELD	22Vdc - 42Vdc	32Vdc 11W STD		
MAGNETIC BASE	N/A	N/A		

ADD-ON

Magnetic Base

