

LED PRODUCTS [Train Destination Indicator-10M2,3,5]

EWEB 4251



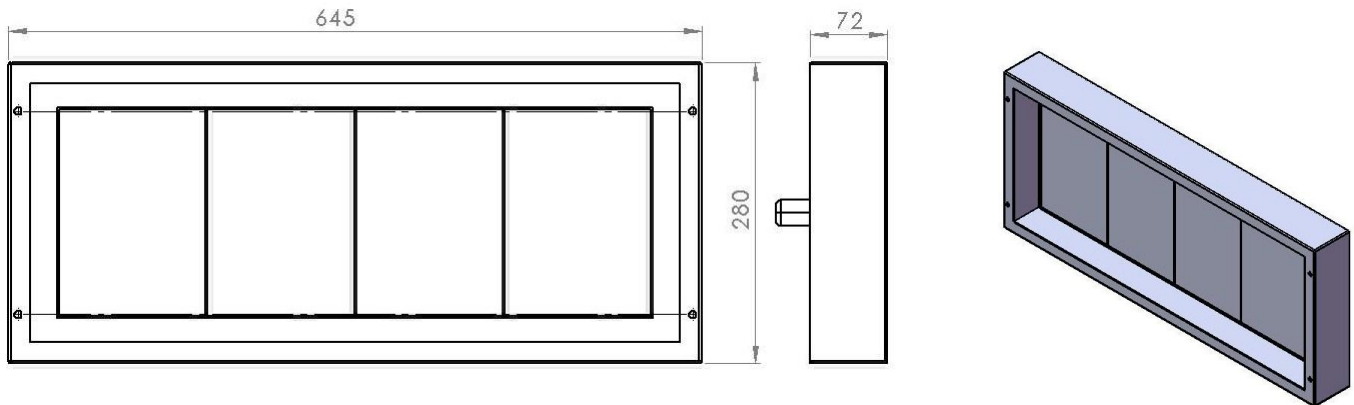
DESCRIPTION:

The construction of the TDI system is a robust sheet metal enclosure specially made to accommodate four seven segment displays, sensor, decoder electronics and DC-Dc converter. A separate sheet metal enclosure accommodates the four thumb wheel switches to set up the desired number on the display. These two enclosures are connected with a screened cable to do the data transfer from the switches to the seven segment displays. The TDI system is easily mounted behind the windscreen with the switches in the control panel of the motor coach.

FEATURES:

- 110Vdc System
- Light Sensor
- Metal Frame (black non-reflective powder coated)
- Thumbwheel Selector Unit
- 25 Special Application LED's per segment
- 350mcd per LED
- 45° viewing angle at 30M

OUTLINE DIMENSIONS (in millimetres):



SPECIFICATION SHEET:

PRODUCT (TDI)	INPUT VOLTAGE	COLOUR	LED COLOUR	OVERALL SIZE (L x W x H) mm	DC-DC CONVERTER
10M3, 10M2, 10M5	110Vdc	BLACK	RED	645 x 72 x 280	60-200Vdc to 24/5Vdc
10M5 (NO LOOMS)	110Vdc	BLACK	RED	645 x 72 x 280	60-200Vdc to 24/5Vdc