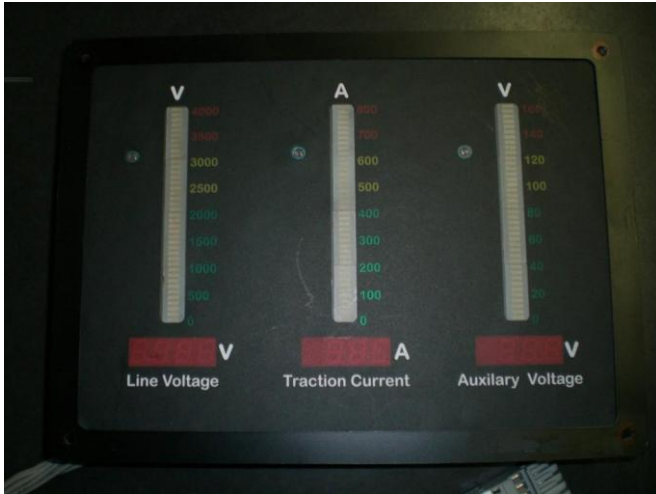


# LED PRODUCTS [LED Bar Measurement Device]

## EWEB 4913



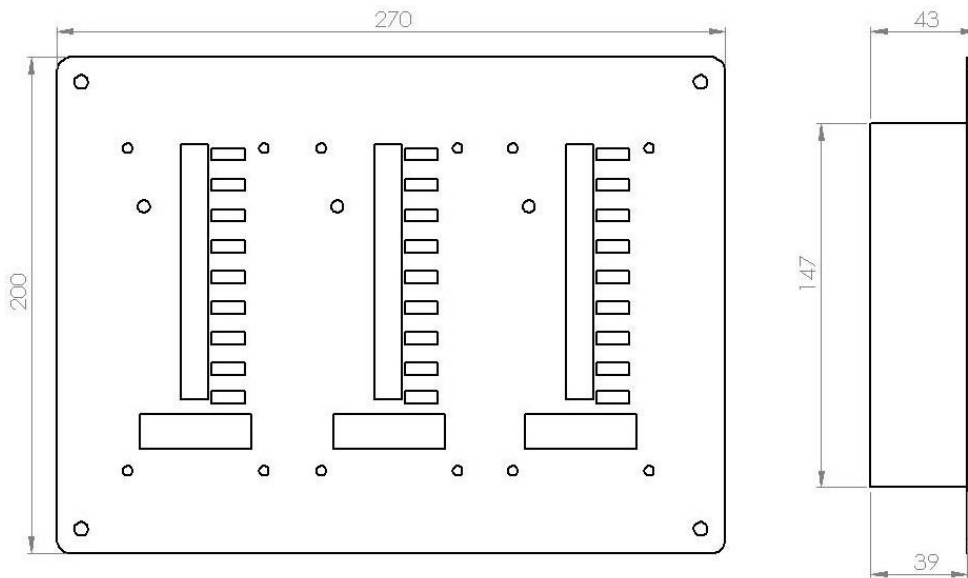
### DESCRIPTION:

The LED BAR is a device designed to display a variety of measured Voltages and Currents on the I0M5 and I0M3 motor coaches.

### FEATURES:

- Power supply isolated from measured input voltage
- Dimming feature for changing light conditions
- PSU is soft start and shunt shut down controlled
- PSU has under voltage lock out with hysteresis
- PSU low standby current
- PSU over temperature protection
- In circuit programmable

### OUTLINE DIMENSIONS (in millimetres):



### SPECIFICATION SHEET:

| PRODUCT                    | INPUT VOLTAGE | OVERALL SIZE (Bracket)        |
|----------------------------|---------------|-------------------------------|
| LED BAR MEASUREMENT DEVICE | 110Vdc        | 270(L)mm x 200(W)mm x 43(H)mm |
| LINE VOLTAGE MODULE        | 110Vdc        | 142(L)mm x 57(W)mm x 33(H)mm  |
| TRACTION CURRENT MODULE    | 110Vdc        | 142(L)mm x 57(W)mm x 33(H)mm  |
| AUXILARY VOLTAGE MODULE    | 110Vdc        | 142(L)mm x 57(W)mm x 33(H)mm  |