

HEATING PRODUCTS [*Heater Demister*]

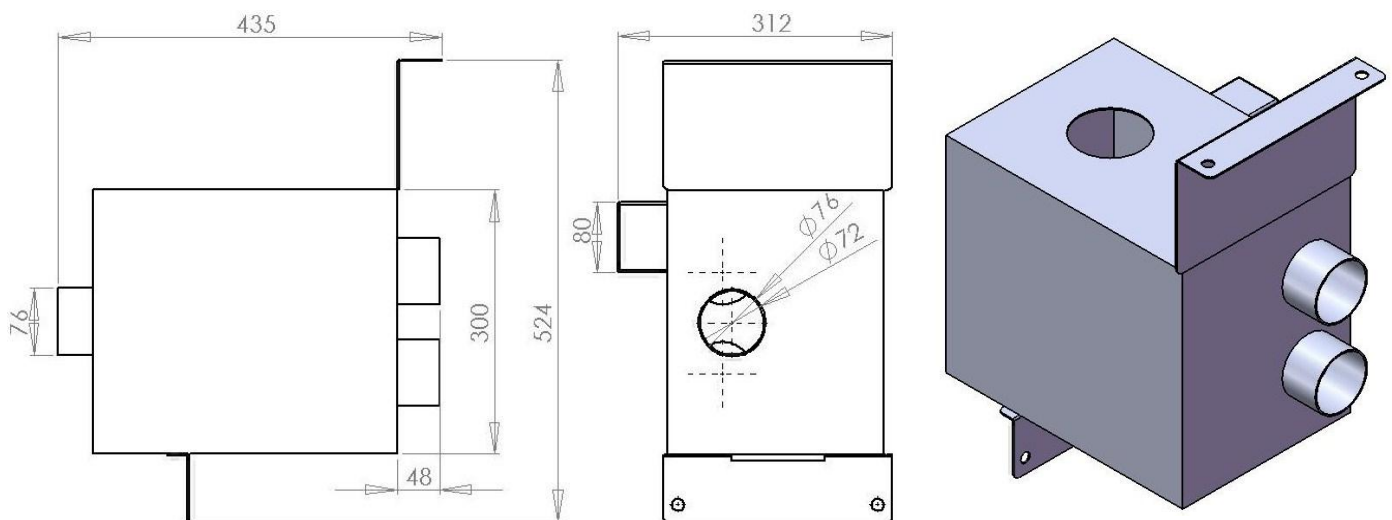
EWEB 6301 - Heater/Blower



DESCRIPTION:

The heater/blower is the main unit of the system. It is the only unit that requires a power connection, making installation easier and more cost-efficient. It houses the fan that enhances the airflow of the system, the 2 elements for heating the air as well as the built-in protection systems. A selector switch (usually mounted in the control panel) can be wired to the unit to allow one of the following settings to be selected; off, high fan, low heat, high heat. The high fan setting switches on the fan only, supplying only cold air to the plenum boxes. The low heat function switches on the fan as well as one of the elements, the high heat function will switch on an additional element, providing the plenum boxes with heated air

OUTLINE DIMENSIONS (in millimetres):



SPECIFICATION SHEET:

SPECIFICATIONS	DATA
FAN MOTOR CURRENT	2A
LOW HEAT ELEMENT CURRENT	6A
HIGH HEAT ELEMENT CURRENT	5.9A
LOW HEAT ELEMENT RESISTANCE	18Ω
HIGH HEAT ELEMENT RESISTANCE	18Ω
OVERALL SIZE (L x W x H) mm	524 x 435 x 312 mm
MASS	11.4kg